

HydroWhirl® Poseidon®



Tank Washing - PTFE Spray Nozzle

DESIGN FEATURES

- Cleans more quickly, and uses less water and lower pressure than static tank washers
- PTFE construction:
 - Ideal for harsh chemical environments
 - Corrosion resistant
- Three connections: pipe, tube, or DIN clip-on. Threaded connections available upon request.
- Made from FDA-approved materials for use in Clean-In-Place (CIP) applications.

SPRAY CHARACTERISTICS

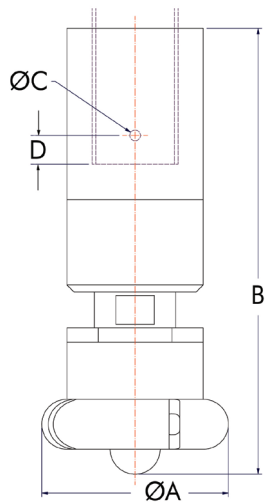
- Slow spinning, longer spray dwell time on the target surface increases impact over conventional rotating designs
- Complete 360° omnidirectional spray pattern

Flow rates: 58.3 to 333 l/min

Minimum Tank Opening:

Small: 75mm, Large: 83mm

TANK WASHING



HydroWhirl Poseidon® Nozzle Coverage Chart When spraying at 2.8 bar	
Nozzle Number	Washing Diameter (m)
HWP-32	4.5
HWP-37	3.5
HWP-48	5.5
HWP-55	6.5
HWP-65	6.0
HWP-73	5.0

Connection Type	CONNECTION SIZES					
	Body Size					
	SMALL			LARGE		
Threaded	1/2"	3/4"	1"	1"	1-1/4"	1-1/2"
Pipe Clip On	3/4"	1"		1"	1-1/4"	1-1/2"
Tube Clip On	1"	1-1/4"		1-1/2"		1-3/4"
DIN Clip On	20mm	25mm		40mm		

Dimensions are approximate. Check with BETE for critical dimension applications.
Not recommended for applications over 4 bar.

TO ORDER: specify pipe size, connection type, nozzle number, spray angle, and material.

HydroWhirl Poseidon® Nozzle Flow Rates* and Dimensions

Body Size	Nozzle Number	Spray Angle	LITERS PER MINUTE @BAR						Dimensions (mm)				Mass (g)
			0.7 bar	1 bar	1.5 bar	2 bar	3 bar	4 bar	A	B	C	D MAX	
SMALL	HWP-32	360°	58.3	70.6	87.8	102	127	149	74.7	163	4.8	12.7	822
	HWP-37		67.9	81.9	101	118	146	170					
LARGE	HWP-48		85.6	104	129	151	189	221	82.6	185	4.8	12.7	
	HWP-55		100	121	150	175	217	253					
	HWP-65		120	145	179	207	256	297					
	HWP-73		135	163	201	233	287	333					

Standard Materials: Nozzle: PTFE; Retaining Clip: 316 stainless steel

*Flowrates lower with threaded connection. Contact BETE for more information.