

HydroClaw

Tank Washing - Superior Clog Resistance

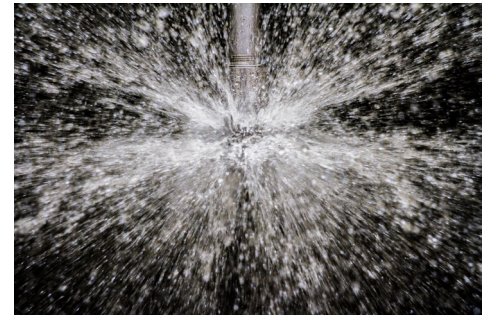
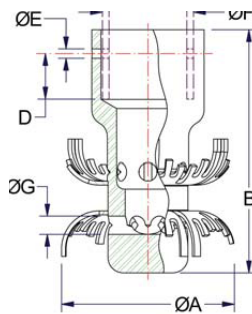
DESIGN FEATURES

- Patent-pending, clog-resistant design with no moving parts
- Allows passage of particles over 7 mm in diameter, three times the free passage of a comparable spray ball
- Made from FDA compliant 316L stainless steel for use in food-grade and sanitary Clean-In-Place (CIP) applications
- Low pressure/high flow operation quickly cleans tank walls to reduce overall water consumption compared to a static spray ball
- Self-draining and self-flushing
- Laser-welded for durability
- Clip-on nozzles include low-profile retaining pin for secure connection
- Fits through either 63.5 or 76 mm diameter opening

SPRAY CHARACTERISTICS

- Vigorous rinsing action quickly flushes solids and contamination from vessels
- Complete 360° omnidirectional coverage
- Optimum cleaning performance at 2 bar
- Recommended installation 0.6 - 1.0 m vertically below top of tank

Flow rates: 118.5 - 442 L/min



ROTARY SPRAY

Female Connections	Nozzle Number	Litres per minute at Pressure in Bar				Dimensions (mm)						Free Pass G	Wt (g)	Coverage Diameter 2Bar	
		1	1.5	2	3	A	B	D	E	F					
3/4" BSP/NPT														416	
G3/4	HC-42	118.5	136.3	152.2	166.2	60.5	91.2	-	-	-	6.4	413	2.4 (m)		
1" Tube Weld-On													325		
1" Tube clip-On											25.4	391			
DN20 Tube Clip-On	HC-42	125.3	144.6	160.9	175.6	60.5	91.2	19.1	4.1	23.1	6.4	416	2.4 (m)		
3/4" Pipe Clip-On											26.7	382			
1" NPT/BSP													649		
G1	HC100	279	322	360	394	73.2	102	-	-	-	7.62	635	3.05 (m)		
1-1/2" Tube Weld-On													635		
1 1/2" Tube Clip-On											38.1	527			
DN40 Tube Clip-On	HC100	312	361	403	442	73.1	102	19.1	4.1	40.0	7.62	437	3.05 (m)		
1" Pipe Clip-on											33.5	598			