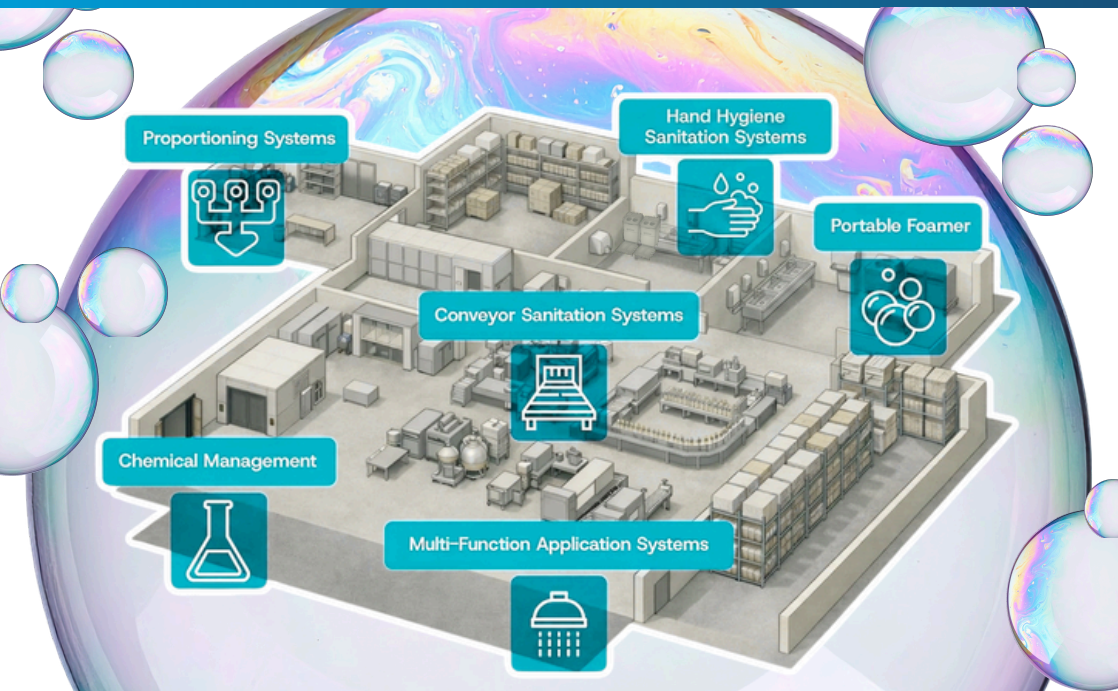




THE
SPRAY NOZZLE
PEOPLE

Washdown Systems

Clean-in-Place Solutions for Hygiene Improvement



+44 (0)1273 400092

enquiries@spray-nozzle.co.uk

www.spray-nozzle.co.uk

**Updated
May 2026**

Table of Contents

	Page
Hand & Foot Sanitising Systems	1
Conveyor Cleaning	2
Foaming & Sanitising Systems	3-4
Foaming Systems.....	3
Sanitising Systems.....	4
Entryway Foaming Systems	5-6
Fogging Systems	7-8
Chemical Management Systems	9-10
Accessories	11
About Us	12
The Group	13



Link Library

Scan a QR code or use the clickable link to access each resource and learn more

FOAMING



SANITISING



FOGGING SYSTEMS



ENTRYWAY SYSTEMS



CHEMICAL SYSTEMS



CONVEYOR CLEANING



ACCESSORIES



HAND & FOOT SYSTEMS



Hand & Foot Sanitising Systems

Solutions to remove human variability and increase protocol adherence

Meritech handwashing and foot sanitising systems make hygiene fast, consistent and easy to manage in busy production environments. They standardise a perfect clean every time, helping ensure staff enter production zones pathogen-free with no cross-contamination, removing over 99.9% of pathogens **in just 12 seconds**.

CleanTech® EVO Automated Handwash Systems

- Durable, hygienic and easy-to-clean designs
- Compatible with existing sink infrastructure
- Can be enhanced with footwear sanitising pans for complete hand and footwear sanitising in 12 seconds



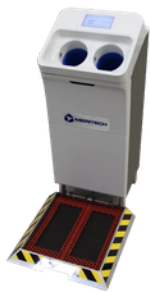
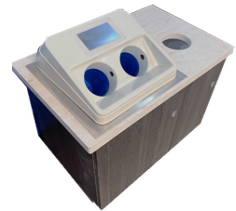
EVO One
Single-station
free-standing
system



EVO Three
Triple-station
free-standing
system



EVO In-Counter
Single-station
counter-top
system



Sole Clean Footwear Enhancement

- Enhancement for EVO handwash systems
- Ideal for dry production settings
- Can be used with any type of street shoe or work boot

Sole Clean Uno

- Requires zero utility hookups
- Simply step on the system and footwear sanitising solution sprays across the soles of all types of footwear
- Uses a fast-drying solution to reduce moisture in production areas



Conveyor Cleaning

Fixed or portable conveyor systems for consistent and complete sanitisation

Designed for Clean-in-Place conveyor sanitising with optional manual use, the Conveyor-Mate™ features a fully adjustable stainless steel spray arm that can be permanently or temporarily mounted for precise positioning. The Spreader Nozzle™ delivers a wide, rotatable spray pattern for consistent coverage, while Venturi technology uses mains pressure (2.4–8.6 bar) to draw and blend chemical concentrate before application. The spray arm can also be quickly replaced with a wand for manual sanitising when required.

Conveyor-Mate™ 315 Sanitiser System (975910)



- Fully adjustable spray arm designed to suit multiple conveyor positions, including horizontal, vertical, angled, and side-by-side configurations
- 360° rotatable Spreader Nozzle™ for flexible spray direction and improved coverage
- Targets hard-to-reach areas for more complete conveyor sanitising
- Spray arm can be permanently or temporarily mounted for installation flexibility
- Designed for adaptable Clean-in-Place conveyor sanitising applications

Conveyor-Mate™ 315 / 315 Sanitiser System (975912)



- Portable 19 L dual-system conveyor sanitising unit for flexible on-site use
- Dual injector bodies operate independently for single-side application or simultaneously for top and underside coverage
- Fully adjustable spray arms extend vertically and horizontally to suit a wide range of conveyor positions
- Stainless steel Spreader Nozzles™ deliver a wide, adjustable spray pattern for consistent coverage
- Nozzles can be rotated to optimise spray angle and reach difficult areas
- Designed for adaptable conveyor cleaning and sanitising in varied production environments

Foaming & Sanitising Systems

Reliable, robust chemical application systems for consistent cleaning and hygiene control

FOAMING SYSTEMS

Lafferty foaming and sanitising systems centralise chemical delivery, reducing variables linked to human error and manual handling. Built for harsh chemical environments, they're designed for continuous 24/7 operation where standard equipment is often prone to failure.



Ultimate SS Foamer (94115-G)

- Projects thick foam up to 3.6 m
- Adjustable wet/dry foam settings
- Durable stainless steel design



Model 25 Compact Airless Foamer (96925-B32)

- 0.9 L hose-end foamer with accurate dilution
- Projects foam up to 3.6 m
- Ergonomic design reduces repetitive strain



Portable 2-Wheel 76 L Liberty Foamer (941219)

- Projects thick foam up to 3 m
- Covers 46 m² in minutes
- Efficient coverage in hard-to-reach areas without constant refills



LC Foamer (91505-G)

- Uses mains water pressure (2.4-8.6 bar)
- Covers up to 46 m² in 2 minutes
- Fan pattern nozzle with up to 3.6 m range

HV Foamer (916105-G)

- Fan pattern nozzle with up to 4.5 m range
- Covers up to 46 m² in 1 minute
- Adjustable wet/dry foam consistency

Other Popular Models

- Ultimate Foamer Polybody (905104-G)
- BPSS Foamer - Boosted Pressure (912115)
- HPSS Foamer - High Pressure (91815)
- Hyper SS Foamer - High Pressure, Large Volume (91715)
- 60.5 L Internal Tank Foamer (925916)
- 142 L Internal Tank Foamer (925917)
- 227 L Portable Box Foamer (94188)

Foaming & Sanitising Systems

Reliable, robust chemical application systems for consistent cleaning and hygiene control

SANITISING SYSTEMS



Sentry Hand Sanitiser Dispenser (Floor Mount) (976901)

- No electricity required - zero battery or running costs
- Ideal for transition zones to help prevent cross-contamination
- All stainless steel construction for long-term durability



WR-2 Foam / Rinse / Sanitise with SmartWand™ (975225)

- SmartWand™ system - switch between foaming, rinsing, and sanitising in one ergonomic wand
- Airless operation - no compressed air required
- High-impact foam projects up to 1.8 m for full coverage
- Chemical-resistant components with easy-read pressure gauge and colour-coded dilution tips



517 Sanitiser (973750)

- High-volume Venturi system using standard mains water pressure (2.4-8.6 bar)
- Precision metering tips for accurate no-rinse sanitising
- 20.4 L/min heavy spray for fast, efficient coverage via hose and fan nozzle



517 Sanitise / Ultimate Foam Hose Multi-Drop Station (HDS) (914220)

- Dual-action system - switch between foam and sanitiser
- 3.6 m spray reach with precise metering to reduce chemical waste
- Rugged build designed for reliable mains water operation
- Complete hose and wand kit included

Other Popular Models

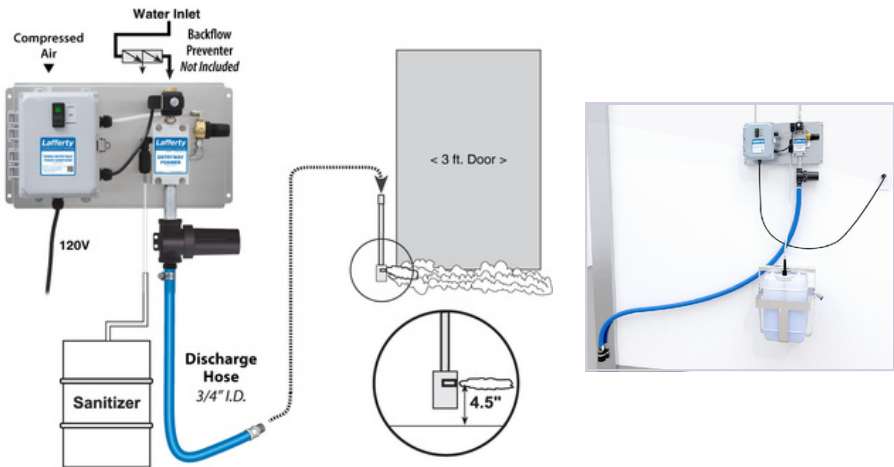
- 517 Sanitise / LC Foam HDS (915220)
- 517 Sanitise / Rinse / LC Foam HDS (915225)
- W-505S Sanitise / Rinse / BPSS Foam HDS (912127)
- Pump Fed Sanitise / Foam HDS (920120)
- High Flow Level Master (989108)
- Central Pump System (Stainless Steel / Santoprene) (919065S)
- Central Pump System (919050)

Entryway Foaming Systems

Automated sanitising barriers with precise dilution for any entry size

Lafferty Entryway Foamers provide a freshly-diluted, automated chemical barrier. By combining heavy-duty industrial durability with programmable precision, they deliver a reliable sanitising solution that scales from narrow employee walk-doors to 4.9 m-wide overhead bays.

Venturi System Timed Entryway Foam Sanitiser (976500)



- Fully automated entryway system delivering consistent, timed sanitising coverage
- Eliminates manual mixing by automatically blending concentrate with mains water on demand
- Reduces waste, cost, and mess through on-demand dilution
- Provides gap-free coverage using Spreader™ nozzle technology
- Delivers a consistent 0.9 m x 1.2 m foam blanket for complete surface coverage
- Prevents missed areas such as footprints and wheel tracks
- Uses a programmable NEMA-rated timer for automated operation
- Supports continuous 24/7 biosecurity without operator input

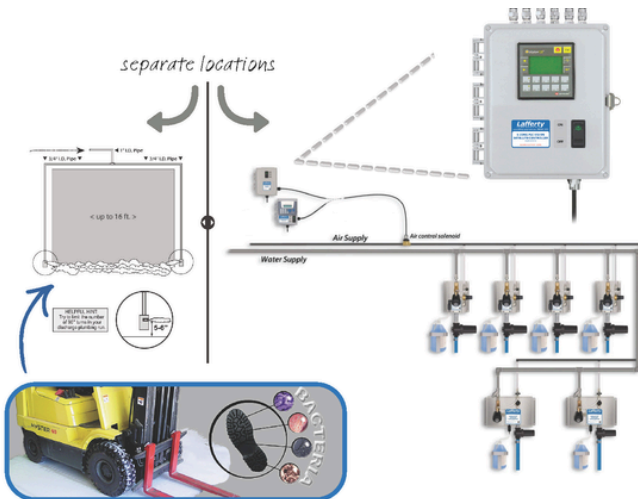
Other Popular Models

- Venturi System Timed Entryway MV - up to 1.8 m wide ([976530](#))
- Venturi System Timed Entryway HV - up to 4.8 m wide ([976560](#))

Entryway Foaming Systems

Automated sanitising barriers with precise dilution for any entry size

6-Zone PLC Vision Entryway Satellite Controller (976710)



- Controls up to 6 zones of up to 10 Vision Satellite Pump-Fed Entryway Foam Sanitiser units
- Allows each zone to be programmed independently for flexible site control
- Eliminates the need for electrical connections at each satellite location
- Delivers timed foam application across multiple entryway floors
- Helps prevent cross-contamination from foot and wheeled traffic
- Designed for integration with Vision Satellite Entryway systems
- Supports centralised control of multiple entry points

Compatible Vision Satellite Units

- Vision Satellite Pump-Fed Entryway Foam Sanitiser (Walk Door) (976724)
- Vision Satellite Pump-Fed Entryway MV Foam Sanitiser (Double Door) (976725)
- Vision Satellite Pump-Fed Entryway XV Foam Sanitiser (Wide / Overhead Door) (976726)

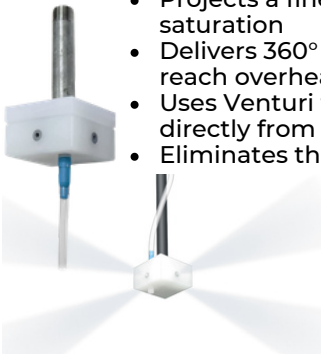
Fogging Systems

From hose-end mist sprayers to full central systems for large-area coverage

Fogging provides a comprehensive approach to facility hygiene:

- **Maximum surface penetration** - Damp mist projects into the air to deliver full coverage across all exposed surfaces.
- **Hidden area coverage** - Fine mist penetrates hard-to-reach areas that manual cleaning may miss.
- **Multi-directional efficiency** - Systems such as the 4-Way Fogger project solution up to 7.6 m in multiple directions for rapid and complete room coverage.
- **Consistent chemical application** - Venturi action draws ready-to-use chemical solutions, ensuring a uniform application rate.
- **Adaptable operation** - Features such as adjustable 2-way or 4-way output and telescoping masts allow tailoring to different room layouts.

305 4-Way Fogger (950104)



- Projects a fine fog up to 7.6 m in four directions for full room saturation
- Delivers 360° multi-directional coverage, including hard-to-reach overhead areas
- Uses Venturi technology to draw chemical concentrate directly from any container
- Eliminates the need for electric pumps or manual mixing
- Built from chemical-resistant, industrial-grade polypropylene for durability
- Designed with no moving parts for low-maintenance, long-term operation
- Suitable for continuous use in harsh industrial environments

305 8-Way Fogger (950108)



- Projects a consistent damp mist up to 7.6 m in eight directions simultaneously for full room coverage
- Delivers 360° saturation for large facility disinfection
- Uses a 14l L/min Venturi system for high-volume output and rapid area coverage
- Penetrates hard-to-reach overhead structures for complete treatment
- Built from machined, chemical-resistant polypropylene for durability
- Designed with no moving parts for maintenance-free operation
- Engineered for reliable continuous use in demanding environments

Fogging Systems

From hose-end mist sprayers to full central systems for large-area coverage



Portable 76 L 305 4-Way Fogger (950721)

- Damp mist sprayer powered by compressed air (0.83 m³/min at 5.5 bar)
- Uses Venturi action to draw ready-to-use chemical solution directly from the tank
- Projects fog up to 7.6 m in four directions for rapid room coverage
- Mounted on a stainless steel cart with integrated 76 L tank
- Adapts easily to different ceiling heights and room layouts
- Designed for efficient large-area sanitising and facility hygiene



Portable 19 L 305 4-Way Fogger (950701)

- Uses Venturi action to draw pre-diluted chemical solution from a user-supplied container
- Projects fog up to 7.6 m in four directions for rapid room coverage
- Converts from 4-way to 2-way fogging using integrated ball valves
- Suitable for both open spaces and narrow areas
- Designed for efficient facility sanitising and hard-to-reach coverage



Chemical Management Systems

Safe, accurate chemical control in demanding environments

Manual mixing isn't just slow; it introduces unnecessary risk. From rapid-fill stations to automated tank replenishment, Lafferty systems are built for demanding industrial environments. Guesswork and "estimated" pours are replaced with controlled, automated delivery, ensuring chemicals are dispensed accurately, consistently and with no room for human error.

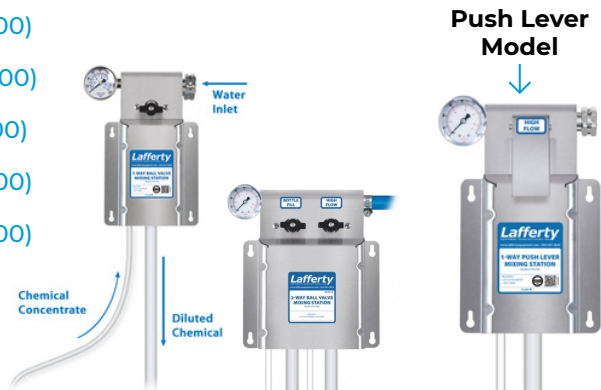


3-Way Ball Valve Mixing Station (985300)

- Allows accurate dilution and dispensing of three separate chemicals via independent valves
 - Enables instant switching between cleaners and sanitiser applications
 - Includes 20 colour-coded metering tips for precise dilution control
 - Ensures consistent chemical performance and improved cost efficiency
- Supports hands-free dispensing into bottles, jugs, or buckets
 - Features durable ball valve activation for reliable operation
 - Offers multiple factory-set flow rate options for controlled filling
 - Available in push-lever configurations for ease of use

Other Popular Models

- 1-Way Ball Valve Mixing Station (985100)
- 2-Way Ball Valve Mixing Station (985200)
- 1-Way Push Lever Mixing Station (981100)
- 2-Way Push Lever Mixing Station (981200)
- 3-Way Push Lever Mixing Station (981300)



Chemical Management Systems

Safe, accurate chemical control in demanding environments

High Volume Mixing Station (985835)



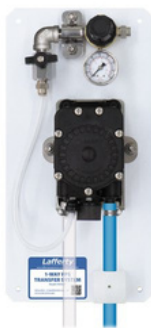
- Fills a 76 L tank in just 2 minutes using a 37.5 L/min flow rate
- Eliminates manual mixing to improve speed and safety
- Ensures accurate dilution ratios with precision metering tips
- Supports consistent chemical performance through controlled mixing
- Optional trigger gun for precise, controlled filling

517 Trigger Gun Mixing Station (985830)



- Delivers 19 L/min at 2.76 bar for filling containers with ready-to-use chemical solution
- Uses Venturi injection with standard mains water pressure (2.41-6.9 bar) to draw and blend chemical concentrate
- Provides consistent and accurate chemical dilution during operation
- Features a trigger gun for hands-on, controlled filling
- Includes automatic shut-off for improved safety and efficiency

1-Way FPS Transfer System (941601)



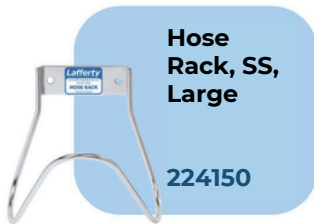
- Transfers chemical concentrate or ready-to-use solution from bulk containers into any sized container
- Operates using compressed air only
- Provides flexible filling for a range of container sizes
- Features a positive shut-off trigger gun for controlled dispensing
- Prevents unattended operation for improved safety and control



Accessories

Add-ons for safer, more efficient industrial performance

In demanding industrial environments, these durable accessories help protect hoses and equipment while improving the safety, cleanliness and efficiency of chemical transfer and application tasks.



Hose Rack, SS, Large

224150



Jug Rack, SS, 4 L, Round, Square

224200



Jug Rack, SS, 9 L, Round, Square

224210



Jug Rack, SS, 19 L, Round, Square

224215



Drum Stick, 84 cm (Viton seals)

491643



Level Master (No Tank)

989304

Additional Popular Accessories

Hose Racks & Straps

- Hose Reel, stainless steel, 12.7 mm x 15.2 m, 10.34 bar with 12.7 mm connection ([224177A](#))

Chemical Jug Racks

- 4 L Stainless Steel Jug Rack – fits round, square & F-style containers ([224201X-SS](#))

Safe Flow Dispensing Accessories

- 40.6 cm Safe Flow Pail Stick ([491612](#))

Drum & Tote Sticks

- 83.8 cm Tote Stick (Viton) ([491653](#))

About SNP



THE
SPRAY NOZZLE
PEOPLE

Delivering hassle reduction, improved efficiency, peace of mind

Our washdown product range is designed to deliver **improved compliance, enhanced safety and greater operational efficiency**, giving you confidence that every stage of your cleaning and sanitising process **is controlled, consistent and fully aligned** with industry standards.

SNP's background is in providing fully engineered spray systems across a wide range of industries and applications, leveraging our many decades of experience in spray nozzle technology to deliver spray optimisation.

We are proud to partner with leading global manufacturers **Lafferty** and **Meritech** to offer our customers these proven, high-performance hygiene solutions.

Lafferty's precision-engineered dilution and application systems are designed to deliver consistent, repeatable cleaning results while maximising chemical efficiency.

Complementing this, Meritech's advanced hand and footwear hygiene technology eliminates human error and supports adherence to key safety frameworks while also reducing downtime and utilities usage.

How we work with you

Get in touch with our friendly team today to discuss your hygiene upgrade needs. We can support you in designing and specifying full systems or on recommending individual products or solutions for your existing setup.

The products in this brochure are our most popular lines and just a small representation of what is available - we can provide solutions to suit virtually any setup or requirement, giving you complete peace of mind and a process that's as hassle-free as possible.

THE GO-TO PEOPLE FOR SUCCESSFUL SPRAY ENGINEERING

OUR PARTNERS IN HYGIENE SOLUTIONS



Lafferty
EQUIPMENT MANUFACTURING LLC
CFS TECHNOLOGIES

laffertyequipment.com

MERITECH
Automating hygiene since 1986

meritech.com



THE GROUP

The Spray Nozzle People are part of The Spray People Group (SPG) - a collection of business units, each specialising in distinct product areas.





THE
SPRAY NOZZLE
PEOPLE

To discuss our washdown and sanitisation solutions or to arrange a site visit, please get in touch with our friendly team.

Email: enquiries@spray-nozzle.co.uk

Call: +44 (0)1273 400092

Clean-in-Place Solutions for Hygiene Improvement

SCAN & CONNECT WITH SNP

 **YouTube**



SCAN ME!

OR [CLICK HERE](#)

LinkedIn



SCAN ME!

OR [CLICK HERE](#)

www.spray-nozzle.co.uk