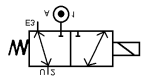


Media: compressed air
 Pressure range: 0 to 10 bar max
 Media temperature: 100°C max
 Ambient temperature: -10° to +50°C max
 Media viscosity: 40 centistokes max
 Opening or Closing time: 50 mSec Max
 Mounting: any position
 Weight: 2200g / 2500g



Universal

3/2 Stainless

1/4 - 1/2

UNIVERSAL DIRECT OPERATED

0 – 10 Bar

TYPE 390



PRESSURE

Ø Port BSP	Ø Orifice (mm)	Flow Kv Ltr/Min	Pressure (bar) ΔP		Seals	Media Temp. Max °C	Part Number
			Min	Max			
1/4	6	5	0	10	NBR FKM	60 100	30639010 + 0142 + voltage 30639020 + 0142 + voltage
3/8 1/2	9	13	0	10	NBR FKM	60 100	30939010 + port + voltage 30939020 + port + voltage

OPTIONS

IP65 Coil & Connector PG9 – DIN 43650 A

1/4 306 Series

Manual override or manual reset

NPT thread

Explosion Proof Enclosure ATEX II 2 G/D EEx d IIC T6, IP65 85°C

Other custom made options available upon request - EExmII T4 ATEX II 2G T4 IP65 T130C

IP65 Coil & Connector PG9 – DIN 43650 A

3/8 & 1/2 309 Series

Manual override

NPT thread

Explosion Proof Enclosure ATEX II 2 G/D EExd IIC T6, IP65 85°C

Other custom made options available upon request – EExmII T4 ATEX II 2G T4 IP65 T130C

ELECTRICAL DATA

Voltage (-10% + 15%) Continuous Duty 100%	Coil	Power Consumption		Insulation class	Enclosure	Electrical connections
		Inrush	Holding			
~ 24 – 48 – 110 - 230 (50 or 60 Hz) (With bridge rectifier to DC)	31037	14 W		F 155°C	IP 65 with connector	3 spades DIN 43650 DIN 40050 VDE 0110
= 12 – 24 - 48						

CONSTRUCTION

Body: 316 Stainless steel

Tube and internal parts: stainless steel

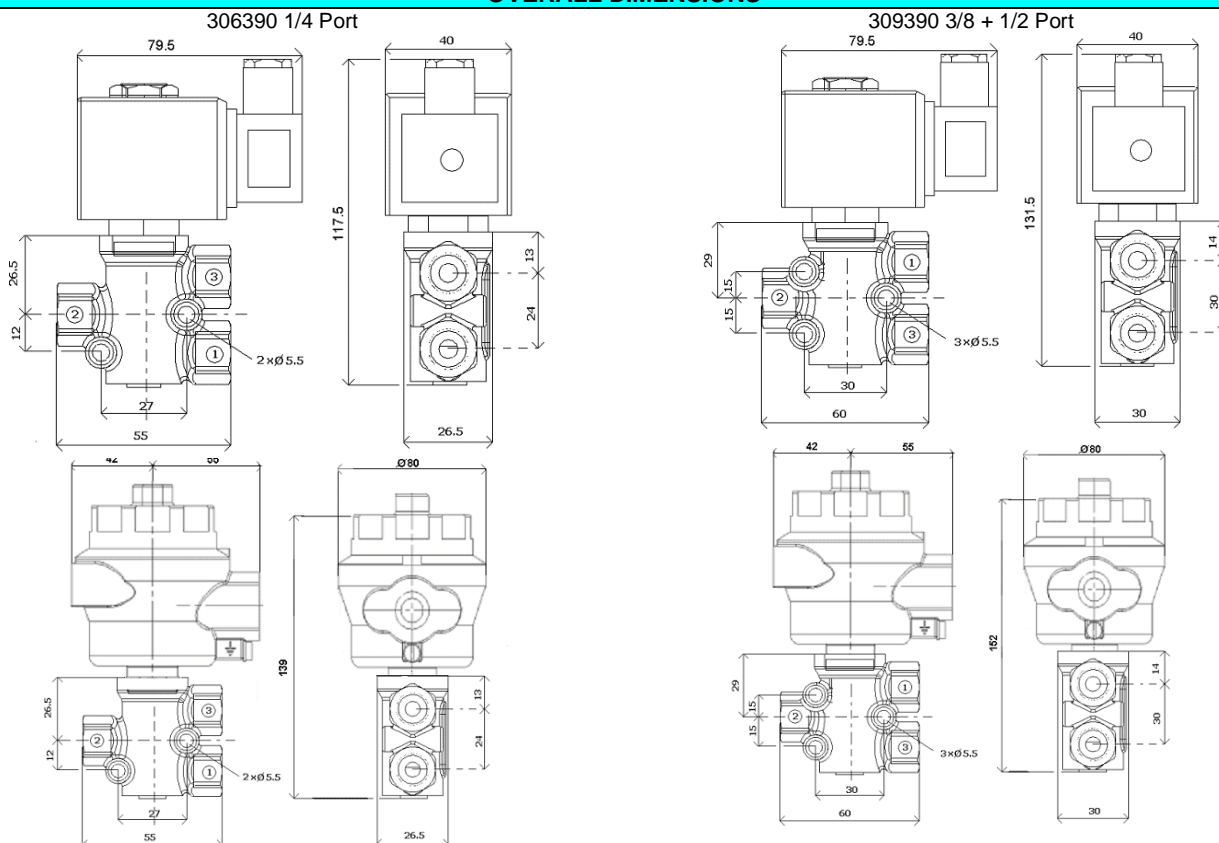
Seals and gaskets: NBR or FKM

Moulded coil: resin

REPAIR KIT

Coil	31037 + voltage
Complete plunger + O'ring + complete piston	KIT + valve part number

OVERALL DIMENSIONS



Media: compressed air – Inert Gas
 Pressure range: 0 to 10 Bar max
 Media temperature: 100°C max
 Ambient temperature: -10°C to +50°C max
 Media viscosity: 40 centistokes max
 Opening or Closing time: 50 mSec Max
 Mounting: any position
 Weight: 2200g / 2500g

3/2 Brass

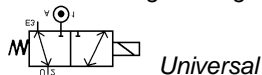
3/8 – 1/2

UNIVERSAL

DIRECT ACTING

0 – 10 Bar

TYPE 380



PRESSURE

Ø Port BSP	Ø Orifice (mm)	Flow Kv Ltr/Min	Pressure (Bar)		Seals	Media Temp. Max °C	Part Number
			Min	Max			
1/4	6	5	0	10	NBR FKM	60 100	30638010 + 0142 + voltage 30638020 + 0142 + voltage
3/8 1/2	9	13	0	10	NBR FKM	60 100	30938010 + port + voltage 30938020 + port + voltage

OPTIONS

IP65 Coil & Connector PG9 – DIN 43650 A
 Manual override or manual reset
 NPT thread
 Explosion Proof Enclosure ATEX II 2 G/D EEx d IIC T6, IP65 85°C

1/4 306 Series

IP65 Coil & Connector PG9 – DIN 43650 A
 Manual override
 NPT thread
 Explosion Proof Enclosure ATEX II 2 G/D EEx d IIC T6, IP65 85°C

3/8 & 1/2 309 Series

Other custom made options available upon request

ELECTRICAL DATA

Voltage (-10% + 15%) Continuous duty 100%	Coil	Power Consumption		Insulation class	Enclosure	Electrical connections
		Inrush	Holding			
~ 24 – 48 – 110 - 230 (50 or 60 Hz) (With bridge rectifier to DC)	31037	14 W		F 155°C	IP 65 with connector	3 spades DIN 43650 DIN 40050 VDE 0110
= 12 – 24 - 48						

CONSTRUCTION

Body: brass
 Tube and internal parts: stainless steel
 Seals and gaskets: NBR or FKM
 Moulded coil: resin

REPAIR KIT

Coil	31037 + voltage
Complete plunger + O'ring + complete piston	KIT + valve part number

OVERALL DIMENSIONS

