



THE
SPRAY NOZZLE
PEOPLE

Uni MK1

Nozzle Holder
Clamp On
Adjustable

NOZZLE HOLDERS

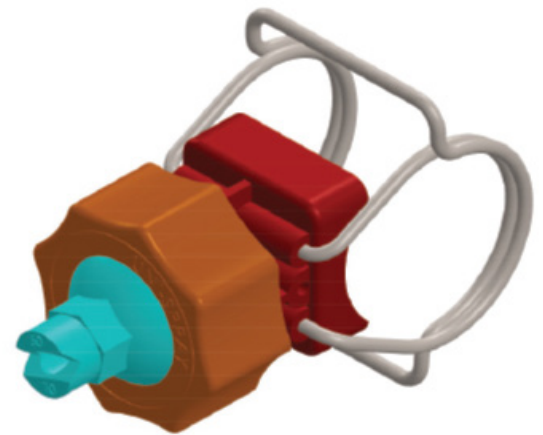
DESIGN FEATURES

- ✓ Ball socket adjustable nozzles
- ✓ Single clamp for up to 4 bar liquid pressure
- ✓ Double clamp for up to 6 bar liquid pressure
- ✓ Standard material is Polypro with 302ss spring
- ✓ Four spigot sizes available: 10mm*, 14mm, 17mm and 19mm
- ✓ Clamp on holder suits pipes between 3/4"* , 1", 1 1/4" and 2" NB
- ✓ Wide range of ball socket nozzles available
- ✓ Full high temp/corrosion resistant version also available in natural PVDF with 316ss spring

* 3/4" NB version comes with 10mm spigot only

BENEFITS

- ✓ Easily adjustable nozzle orientation
- ✓ Cross compatible with other major brands
- ✓ Quick change tip variant available
- ✓ Colour codes for easy identification
- ✓ No need to tap threads for the nozzles

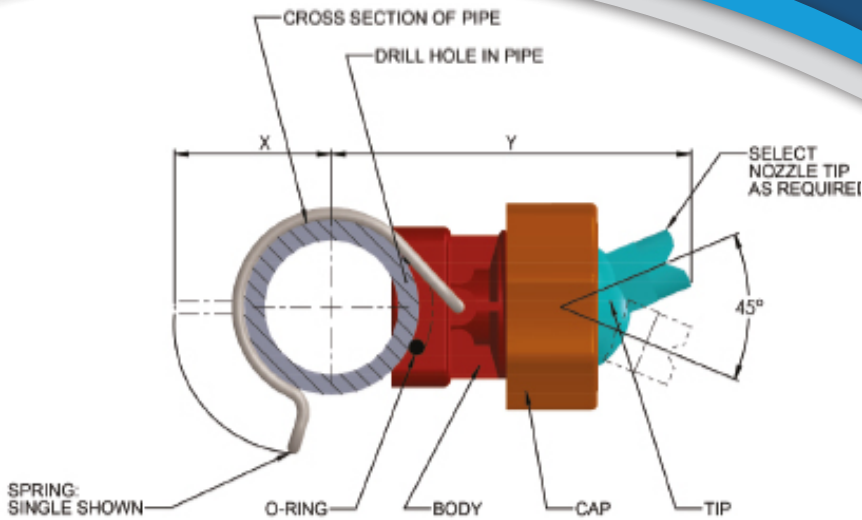


The MK1 clamp nozzle holder system from UniSpray is a handy way to attach spray nozzles to pipe work without the need for tapping threads. The ball socket nozzles allow the orientation and direction of the sprays to be changed easily. Once the nozzle direction is correct it can be locked in place by securing the orange retaining cap. The MK1 system was originally designed for use in pre-treatment spray tunnels but it can be used in any situation where easily adjustable nozzles are required.

CALL NOW : +44 (0) 1273 400092

www.spray-nozzle.co.uk

The Go-to People for spray nozzle solutions



Flat Fan Ball Socket Nozzles for MK1 and MK3 nozzle holders

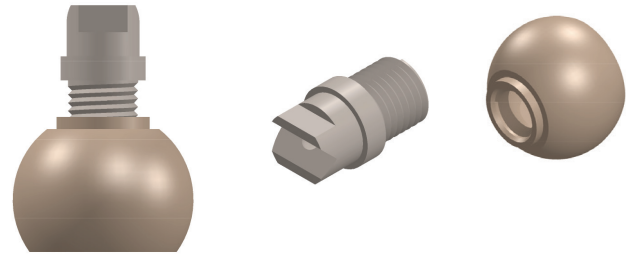
| Code | Colour | Spray Angle | Pattern Type | Flow Rate @ Pressure | | | | | |
|------------------|-----------------------------|-------------|--------------|----------------------|---------|-------|-------|-------|-------|
| | | | | 0.5 Bar | 0.7 Bar | 1 Bar | 2 Bar | 3 Bar | 5 Bar |
| UNI 0080 | Dk. Green | 0° | Flat Spray | 12.92 | 15.3 | 18.28 | 25.84 | 31.65 | 40.86 |
| UNI 3040 | Black | 30° | Flat Spray | 6.59 | 7.8 | 9.32 | 13.18 | 16.14 | 20.84 |
| UNI 4050 | Dk. Green | 40° | Flat Spray | 8.17 | 9.67 | 11.56 | 16.34 | 20.02 | 25.84 |
| UNI 4020 | Turquoise | 40° | Flat Spray | 3.16 | 3.74 | 4.47 | 6.32 | 7.75 | 10 |
| UNI 50100 | Grey | 50° | Flat Spray | 16.09 | 19.04 | 22.75 | 32.17 | 39.4 | 50.87 |
| UNI 5070 | Blue | 50° | Flat Spray | 11.34 | 13.42 | 16.04 | 22.68 | 27.78 | 35.86 |
| UNI 5060 | Orange | 50° | Flat Spray | 9.76 | 11.55 | 13.8 | 19.52 | 23.91 | 30.86 |
| UNI 5050 | Pink | 50° | Flat Spray | 8.17 | 9.67 | 11.56 | 16.34 | 20.02 | 25.84 |
| UNI 5040 | Mauve | 50° | Flat Spray | 6.59 | 7.8 | 9.32 | 13.18 | 16.14 | 20.84 |
| UNI 5030 | Blue | 50° | Flat Spray | 4.74 | 5.62 | 6.71 | 9.49 | 11.62 | 15 |
| UNI 5020 | Lt. Green | 50° | Flat Spray | 3.16 | 3.74 | 4.47 | 6.32 | 7.75 | 10 |
| UNI 6560 | Green | 65° | Flat Spray | 9.76 | 11.55 | 13.8 | 19.52 | 23.91 | 30.86 |
| UNI 6550 | Red | 65° | Flat Spray | 8.17 | 9.67 | 11.56 | 16.34 | 20.02 | 25.84 |
| UNI 6540 | Yellow | 65° | Flat Spray | 6.59 | 7.8 | 9.32 | 13.18 | 16.14 | 20.84 |
| UNI 6530 | Purple | 65° | Flat Spray | 4.74 | 5.62 | 6.71 | 9.49 | 11.62 | 15 |
| UNI 6520 | Grey | 65° | Flat Spray | 3.16 | 3.74 | 4.47 | 6.32 | 7.75 | 10 |
| UNI 8070 | Beige | 80° | Flat Spray | 11.34 | 13.42 | 16.04 | 22.68 | 27.78 | 35.86 |
| UNI 8060 | Beige | 80° | Flat Spray | 9.76 | 11.55 | 13.8 | 19.52 | 23.91 | 30.86 |
| UNI 8050 | Dk. Green | 80° | Flat Spray | 8.17 | 9.67 | 11.56 | 16.34 | 20.02 | 25.84 |
| UNI 8040 | Beige | 80° | Flat Spray | 6.59 | 7.8 | 9.32 | 13.18 | 16.14 | 20.84 |
| UNI 8010 | Black | 80° | Flat Spray | 1.58 | 1.87 | 2.24 | 3.16 | 3.87 | 5 |
| UNI 8006 | Lt. Green | 80° | Flat Spray | 0.98 | 1.15 | 1.38 | 1.95 | 2.39 | 3.08 |
| UNI 9560 | Dk. Green | 95° | Flat Spray | 9.76 | 11.55 | 13.8 | 19.52 | 23.91 | 30.86 |
| UNI 12010 | Grey | 120° | Flat Spray | 1.58 | 1.87 | 2.24 | 3.16 | 3.87 | 5 |
| UNI 12070 | Black | 120° | Flat Spray | 11.34 | 13.42 | 16.04 | 22.68 | 27.78 | 35.86 |
| UNIPLUG | GreyPLUG TO BLANK-OFF SPRAY | | | | | | | | |

Threaded ball sockets

Instead of a complete ball socket nozzle a threaded ball socket is available. This allows for any suitably threaded spray nozzle to be attached to, and used with, the MK1 adjustable holder.

Threaded Ball Sockets

| | | | |
|------------|--------------|-------|------------------|
| 064 | UNI 1/8 BSPT | Beige | 1/8" BSPT FEMALE |
| 066 | UNI 1/4 BSPT | Beige | 1/4" BSPT FEMALE |
| 068 | UNI 3/8 BSPT | Beige | 3/8" BSPT FEMALE |
| 070 | UNI 1/2 BSPT | Beige | 1/2" BSPT FEMALE |



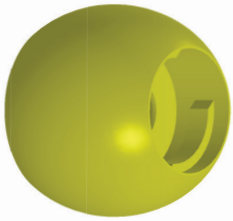
Full & Hollow Cone Ball Socket Nozzles for MK1 and MK3 nozzle holders

| Code | Colour | Spray Angle | Pattern Type | Flow Rate @ Pressure | | | | | |
|------------------|-----------|-------------|--------------|----------------------|---------|-------|-------|-------|-------|
| | | | | 0.5 Bar | 0.7 Bar | 1 Bar | 2 Bar | 3 Bar | 5 Bar |
| UNI 29 HC | Dk. Green | 50° | Hollow Cone | 9.4 | 11.13 | 13.3 | 18.81 | 23.04 | 29.74 |
| UNI 50 HC | Black | 65° | Hollow Cone | 15.82 | 18.73 | 22.37 | 31.64 | 38.75 | 50.03 |
| UNI 08 HC | Blue | 90° | Hollow Cone | 2.38 | 2.81 | 3.36 | 4.75 | 5.82 | 7.51 |
| UNI 20 HC | Orange | 65° | Hollow Cone | 6.33 | 7.49 | 8.95 | 12.65 | 15.49 | 20 |
| UNI 25 HC | Red | 65° | Hollow Cone | 6.86 | 8.11 | 9.69 | 13.71 | 16.79 | 21.68 |
| UNI 35 HC | Blue | 65° | Hollow Cone | 11.61 | 13.74 | 16.41 | 23.21 | 28.43 | 36.7 |
| UNI 16 FC | Turquoise | 40° | Full Cone | 5.01 | 5.93 | 7.08 | 10.02 | 12.27 | 15.84 |
| UNI 17 FC | Yellow | 80° | Full Cone | 5.27 | 6.24 | 7.46 | 10.55 | 12.92 | 16.68 |
| UNI 52 FC | Pink | 65° | Full Cone | 16.35 | 19.35 | 23.12 | 32.7 | 40.05 | 51.7 |

Clamp Sizes

The MK1 clamp holders were specified to fit around standard schedule 40 steel pipes with the stated nominal bore (3/4" - 2"). Plastic piping is generally listed as the outer diameter in mm which differs somewhat from the outer diameters of standard steel pipe. There is some leeway in the spring clamps and the MK1 holder is suitable for most standard plastic pipes. The table below should serve as a guide to size the correct clamp holder.

| Clamp size Nominal bore | Standard ID for schedule 40 pipe | Standard OD for schedule 40 pipe | Max OD for clamps to fit | Min OD for clamps to fit |
|----------------------------|----------------------------------|----------------------------------|--------------------------|--------------------------|
| 3/4" | 20mm | 25.4mm | 28mm | 25.4mm |
| 1" | 25.4mm | 33.4mm | 35mm | 32mm |
| 1 1/4" | 35.1mm | 42.2mm | 44mm | 40mm |
| 1 1/2" | 40.9mm | 48.3mm | 50mm | 47mm |
| 2" | 52.5mm | 60.3mm | 63mm | 59mm |



Quick change tips

The following range of nozzles are available with quick change tips. These tips have a bayonet fitting which slots into a universal ball socket (this is the same part of all the nozzles below). This allows just the tip to be removed and changed without disrupting the orientation of the nozzle.

Quick Change Tip Ball Socket Nozzles for MK1 & MK3 nozzle holders

| Code | Colour | Spray Angle | Pattern Type | Flow Rate @ Pressure | | | | | |
|-------------|-----------|-------------|--------------|----------------------|---------|-------|-------|-------|-------|
| | | | | 0.5 Bar | 0.7 Bar | 1 Bar | 2 Bar | 3 Bar | 5 Bar |
| UNI 29 HC | Dk. Green | 50° | Hollow Cone | 9.4 | 11.13 | 13.3 | 18.81 | 23.04 | 29.74 |
| UNI 0080QC | Dk. Green | 0° | Flat Spray | 12.92 | 15.3 | 18.28 | 25.84 | 31.65 | 40.86 |
| UNI 1550QC | Pink | 15° | Flat Spray | 7.91 | 9.37 | 11.19 | 15.83 | 19.38 | 25.03 |
| UNI 50100QC | Grey | 50° | Flat Spray | 16.09 | 19.04 | 22.75 | 32.17 | 39.4 | 50.87 |
| UNI 5070QC | Blue | 50° | Flat Spray | 11.34 | 13.42 | 16.04 | 22.68 | 27.78 | 35.86 |
| UNI 5060QC | Orange | 50° | Flat Spray | 9.76 | 11.55 | 13.8 | 19.52 | 23.91 | 30.86 |
| UNI 5050QC | Pink | 50° | Flat Spray | 8.17 | 9.67 | 11.56 | 16.34 | 20.02 | 25.84 |
| UNI 65100QC | Lt. Green | 65° | Flat Spray | 16.09 | 19.04 | 22.75 | 32.17 | 39.4 | 50.87 |
| UNI 65700QC | Red | 65° | Flat Spray | 11.34 | 13.42 | 16.04 | 22.68 | 27.78 | 35.86 |
| UNI 6560QC | Green | 65° | Flat Spray | 9.76 | 11.55 | 13.8 | 19.52 | 23.91 | 30.86 |
| UNI 6550QC | Red | 65° | Flat Spray | 8.17 | 9.67 | 11.56 | 16.34 | 20.02 | 25.84 |
| UNI 6540QC | Yellow | 65° | Flat Spray | 6.59 | 7.8 | 9.32 | 13.18 | 16.14 | 20.84 |
| UNI 6530QC | Purple | 65° | Flat Spray | 4.74 | 5.62 | 6.71 | 9.49 | 11.62 | 15 |
| UNI 8070QC | Beige | 80° | Flat Spray | 11.34 | 13.42 | 16.04 | 22.68 | 27.78 | 35.86 |
| UNI 8050QC | Dk. Green | 80° | Flat Spray | 8.17 | 9.67 | 11.56 | 16.34 | 20.02 | 25.84 |
| UNI 8040QC | Beige | 80° | Flat Spray | 6.59 | 7.8 | 9.32 | 13.18 | 16.14 | 20.84 |
| UNI 8020QC | Yellow | 80° | Flat Spray | 3.16 | 3.74 | 4.47 | 6.32 | 7.75 | 10 |
| UNI 8010QC | Black | 80° | Flat Spray | 1.58 | 1.87 | 2.24 | 3.16 | 3.87 | 5 |
| UNI 8006QC | Lt. Green | 80° | Flat Spray | 0.98 | 1.15 | 1.38 | 1.95 | 2.39 | 3.08 |
| UNI 9540QC | Black | 95° | Flat Spray | 6.59 | 7.8 | 9.32 | 13.18 | 16.14 | 20.84 |
| UNI 9530QC | Grey | 95° | Flat Spray | 4.74 | 5.62 | 6.71 | 9.49 | 11.62 | 15 |
| UNI 9520QC | Red | 95° | Flat Spray | 3.16 | 3.74 | 4.47 | 6.32 | 7.75 | 10 |
| UNI 9503QC | Orange | 95° | Flat Spray | 0.47 | 0.56 | 0.67 | 0.94 | 1.16 | 1.49 |
| UNI 12010QC | Grey | 120° | Flat Spray | 1.58 | 1.87 | 2.24 | 3.16 | 3.87 | 5 |
| UNI 12070QC | Black | 120° | Flat Spray | 11.34 | 13.42 | 16.04 | 22.68 | 27.78 | 35.86 |
| UNI 29HCQC | Dk. Green | 50° | Hollow Cone | 9.23 | 10.93 | 13.05 | 18.46 | 22.61 | 29.19 |
| UNI 50HCQC | Black | 65° | Hollow Cone | 15.82 | 18.73 | 22.37 | 31.64 | 38.75 | 50.03 |