



THE  
**SPRAY NOZZLE**  
PEOPLE

# NFS

Stubby



## FLAT FAN

### DESIGN FEATURES

- ✓ Extremely short length for minimum projection and maximum clearance
- ✓ Produces a flat fan spray pattern available in a variety of spray angles
- ✓ Available in straight (parallel) threads only, NPS and G
- ✓ Supplied with gasket to seal the connection

### SPRAY CHARACTERISTICS

- ✓ Spray pattern: Fan
- ✓ Spray angles: 20°, 30°, 45°, 60°, 90° and 120° standard
- ✓ Flow rates: 0.20 to 951 l/min



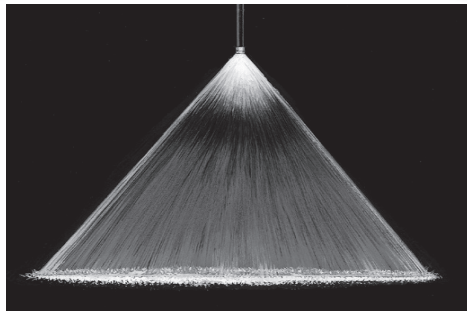
The NFS nozzle is a flat fan spray nozzle with an extremely short profile. This makes it the nozzle of choice where space is extremely tight. The NFS comes in a variety of different spray angles and flow rates and in multiple threads. The NFS finds use in many applications including:

Lubrication  
Moistening  
Product cooling  
Cleaning  
And many more.

CALL NOW : +44 (0) 1273 400092

[www.spray-nozzle.co.uk](http://www.spray-nozzle.co.uk)

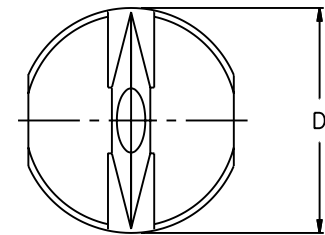
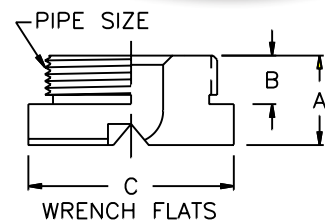
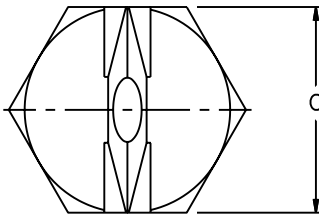
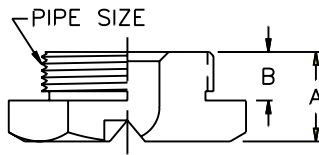
The Go-to People for spray nozzle solutions



Fan 90°



Fan 45°



## NFS Flow Rates

Flat Fan, 20°, 30°, 45°, 60°, 90° & 120° Spray Angles, 1/4" to 2" Pipe Sizes  
Standard Materials: Brass, 303 and 316 Stainless Steel, and PVC

Nozzle Number	K	Litres Per Minute @ BAR							Orifice Dia.
		0.5 BAR	1 BAR	2 BAR	3 BAR	5 BAR	7 BAR	10 BAR	
NFS12	0.28	0.2	0.28	0.4	0.49	0.63	0.75	0.89	0.8
NFS19	0.44	0.31	0.44	0.63	0.77	0.99	1.18	1.41	1
NFS31	0.71	0.5	0.71	1	1.23	1.59	1.88	2.25	1.2
NFS39	0.88	0.62	0.88	1.25	1.53	1.98	2.34	2.79	1.35
NFS50	1.13	0.8	1.13	1.6	1.96	2.53	2.99	3.58	1.5
NFS59	1.35	0.95	1.35	1.9	2.33	3.01	3.56	4.25	1.65
NFS77	1.77	1.25	1.77	2.5	3.06	3.95	4.67	5.59	2
NFS98	2.23	1.58	2.23	3.15	3.86	4.98	5.9	7.05	2.2
NFS12	2.83	2	2.83	4	4.9	6.33	7.48	8.95	2.5
NFS15	3.36	2.38	3.36	4.75	5.82	7.51	8.89	10.6	2.7
NFS25	5.66	4	5.66	8	9.8	12.7	15	17.9	3.5
NFS31	7.1	5.02	7.1	10	12.3	15.9	18.8	22.5	4
NFS39	8.83	6.25	8.83	12.5	15.3	19.8	23.4	27.9	4.5
NFS50	11.3	8	11.3	16	19.6	25.3	29.9	35.8	5
NFS62	14.1	10	14.1	20	24.5	31.6	37.4	44.7	5.5
NFS77	17.7	12.5	17.7	25	30.6	39.5	46.7	55.9	6
NFS93	21.2	15	21.2	30	36.7	47.4	56.1	67	6.9
NFS124	28.3	20	28.3	40	49	63.3	74.8	89.5	8
NFS155	35.3	25	35.3	50	61.2	79	93.5	112	9
NFS185	42.1	29.8	42.1	59.6	73	94.2	112	133	9.5
NFS195	44.6	31.5	44.6	63	77.2	100	118	141	10
NFS309	70.4	49.8	70.4	100	122	158	186	223	12
NFS496	113	80	113	160	196	253	299	358	15
NFS557	127	89.8	127	180	220	284	336	402	16
NFS620	141	100	141	200	245	316	374	447	17
NFS775	177	125	177	250	306	395	467	559	19
NFS977	223	158	223	315	386	498	590	705	21
NFS1130	258	182	258	365	447	577	683	816	22.5
NFS1320	301	213	301	425	521	673	796	951	24.5

Flow Rate (l/min) = K √ bar

## NFS Dimensions & Spray Angles

Pipe Size	Nozzle Number	Available Spray Angles	Dimensions (mm)			
			A	B	C	D
1/4"	NFS 012 to NF 39	20° 30° 45° 60° 90° 120°				
	NFS 50	20° 30° 45° 60° 90°	11.9	7.11	17.5	19.1
	NFS 62	45° 60° 90°				
	NFS 77	45°				
3/4"	NFS 25 To NFS 77	20° 30° 45° 60° 90° 120°				
	NFS 93*	120°				
	NFS 124	20° 30° 45° 60° 90°				
	NFS 155	20° 30° 45° 60° 90° 120°	15	7.87	31.8	35.1
1 1/4"	NFS 185	120°				
	NFS 195	20° 30° 45° 60° 90° 120°				
	NFS 309	20° 30° 45° 60° 90° 120°				
2"	NFS 124 to NFS496	20° 30° 45° 60° 90° 120°	22.1	11.9	50.8	55.4
	NFS 557 to NFS1320	20° 30° 45° 60° 90° 120°	31.8	20.1	69.9	76.2