



THE
SPRAY NOZZLE
PEOPLE

Uni MK3

Nozzle Holder
Threaded
Adjustable

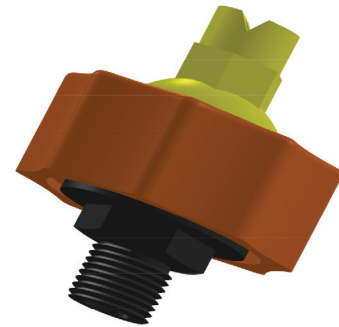
NOZZLE HOLDERS

DESIGN FEATURES

- ✓ Ball socket adjustable nozzles
- ✓ Available in 1/4" , 3/8" or 1/2" male thread to connect to pipework
- ✓ Wide range of ball socket nozzles available

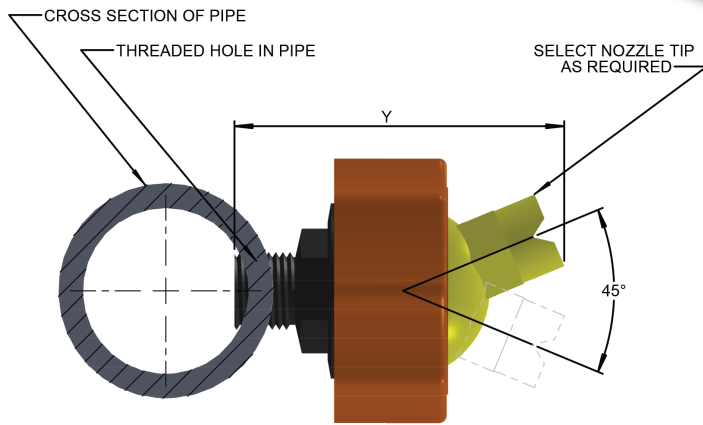
BENEFITS

- ✓ Easily adjustable nozzle orientation
- ✓ Cross compatible with other major brands
- ✓ Quick change tip variant available
- ✓ Colour codes for easy identification



The MK3 adjustable nozzle holder allows the orientation and angle of spray nozzles to be changed easily. These holders can be fitted with a wide variety of ball socket nozzles which can be locked in place by tightening the orange retaining cap. The nozzle holder threads into the pipe work with either a 1/4", 3/8" or 1/2" male thread. For additional versatility the ball socket nozzle can be replaced with a threaded ball socket to take any other suitably threaded nozzle.

CALL NOW : +44 (0) 1273 400092



Flat Fan Ball Socket Nozzles (for full list see

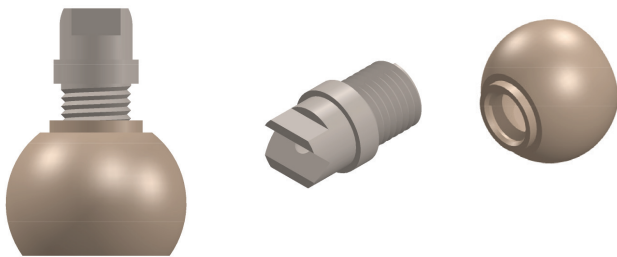
Code	Colour	Spray Angle	Pattern Type	Flow Rate @ Pressure					
				0.5 Bar	0.7 Bar	1 Bar	2 Bar	3 Bar	5 Bar
UNI 0080	Dk. Green	0°	Flat Spray	12.92	15.3	18.28	25.84	31.65	40.86
UNI 3040	Black	30°	Flat Spray	6.59	7.8	9.32	13.18	16.14	20.84
UNI 4050	Dk. Green	40°	Flat Spray	8.17	9.67	11.56	16.34	20.02	25.84
UNI 4020	Turquoise	40°	Flat Spray	3.16	3.74	4.47	6.32	7.75	10
UNI 50100	Grey	50°	Flat Spray	16.09	19.04	22.75	32.17	39.4	50.87
UNI 5070	Blue	50°	Flat Spray	11.34	13.42	16.04	22.68	27.78	35.86
UNI 5060	Orange	50°	Flat Spray	9.76	11.55	13.8	19.52	23.91	30.86
UNI 5050	Pink	50°	Flat Spray	8.17	9.67	11.56	16.34	20.02	25.84
UNI 5040	Mauve	50°	Flat Spray	6.59	7.8	9.32	13.18	16.14	20.84
UNI 5030	Blue	50°	Flat Spray	4.74	5.62	6.71	9.49	11.62	15
UNI 5020	Lt. Green	50°	Flat Spray	3.16	3.74	4.47	6.32	7.75	10
UNI 6560	Green	65°	Flat Spray	9.76	11.55	13.8	19.52	23.91	30.86
UNI 6550	Red	65°	Flat Spray	8.17	9.67	11.56	16.34	20.02	25.84
UNI 6540	Yellow	65°	Flat Spray	6.59	7.8	9.32	13.18	16.14	20.84
UNI 6530	Purple	65°	Flat Spray	4.74	5.62	6.71	9.49	11.62	15
UNI 6520	Grey	65°	Flat Spray	3.16	3.74	4.47	6.32	7.75	10
UNI 8070	Beige	80°	Flat Spray	11.34	13.42	16.04	22.68	27.78	35.86
UNI 8060	Beige	80°	Flat Spray	9.76	11.55	13.8	19.52	23.91	30.86
UNI 8050	Dk. Green	80°	Flat Spray	8.17	9.67	11.56	16.34	20.02	25.84
UNI 8040	Beige	80°	Flat Spray	6.59	7.8	9.32	13.18	16.14	20.84
UNI 8010	Black	80°	Flat Spray	1.58	1.87	2.24	3.16	3.87	5
UNI 8006	Lt. Green	80°	Flat Spray	0.98	1.15	1.38	1.95	2.39	3.08
UNI 9560	Dk. Green	95°	Flat Spray	9.76	11.55	13.8	19.52	23.91	30.86
UNI 12010	Grey	120°	Flat Spray	1.58	1.87	2.24	3.16	3.87	5
UNI 12070	Black	120°	Flat Spray	11.34	13.42	16.04	22.68	27.78	35.86
UNIPLUG	GreyPLUG TO BLANK-OFF SPRAY								

Full & Hollow Cone Ball Socket Nozzles for MK1 and MK3 nozzle holders

Code	Colour	Spray Angle	Pattern Type	Flow Rate @ Pressure					
				0.5 Bar	0.7 Bar	1 Bar	2 Bar	3 Bar	5 Bar
UNI 29 HC	Dk. Green	50°	Hollow Cone	9.4	11.13	13.3	18.81	23.04	29.74
UNI 50 HC	Black	65°	Hollow Cone	15.82	18.73	22.37	31.64	38.75	50.03
UNI 08 HC	Blue	90°	Hollow Cone	2.38	2.81	3.36	4.75	5.82	7.51
UNI 20 HC	Orange	65°	Hollow Cone	6.33	7.49	8.95	12.65	15.49	20
UNI 25 HC	Red	65°	Hollow Cone	6.86	8.11	9.69	13.71	16.79	21.68
UNI 35 HC	Blue	65°	Hollow Cone	11.61	13.74	16.41	23.21	28.43	36.7
UNI 16 FC	Turquoise	40°	Full Cone	5.01	5.93	7.08	10.02	12.27	15.84
UNI 17 FC	Yellow	80°	Full Cone	5.27	6.24	7.46	10.55	12.92	16.68
UNI 52 FC	Pink	65°	Full Cone	16.35	19.35	23.12	32.7	40.05	51.7

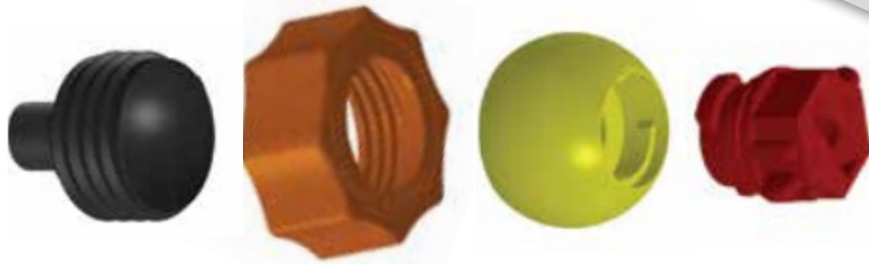
Threaded ball sockets

Instead of a complete ball socket nozzle a threaded ball socket is available. This allows for any suitably threaded spray nozzle to be attached to, and used with, the MK3 adjustable holder.



Threaded Ball Sockets

064	UNI 1/8 BSPT	Beige	1/8" BSPT FEMALE
066	UNI 1/4 BSPT	Beige	1/4" BSPT FEMALE
068	UNI 3/8 BSPT	Beige	3/8" BSPT FEMALE
070	UNI 1/2 BSPT	Beige	1/2" BSPT FEMALE



Quick change tips

The following range of nozzles are available with quick change tips. These tips have a bayonet fitting which slots into a universal ball socket (this is the same part of all the nozzles below). This allows just the tip to be removed and changed without disrupting the orientation of the nozzle.

Quick Change Tip Ball Socket Nozzles for MK1 and MK3 nozzle holders

Code	Colour	Spray Angle	Pattern Type	Flow Rate @ Pressure					
				0.5 Bar	0.7 Bar	1 Bar	2 Bar	3 Bar	5 Bar
UNI 29 HC	Dk. Green	50°	Hollow Cone	9.4	11.13	13.3	18.81	23.04	29.74
UNI 0080QC	Dk. Green	0°	Flat Spray	12.92	15.3	18.28	25.84	31.65	40.86
UNI 1550QC	Pink	15°	Flat Spray	7.91	9.37	11.19	15.83	19.38	25.03
UNI 50100QC	Grey	50°	Flat Spray	16.09	19.04	22.75	32.17	39.4	50.87
UNI 5070QC	Blue	50°	Flat Spray	11.34	13.42	16.04	22.68	27.78	35.86
UNI 5060QC	Orange	50°	Flat Spray	9.76	11.55	13.8	19.52	23.91	30.86
UNI 5050QC	Pink	50°	Flat Spray	8.17	9.67	11.56	16.34	20.02	25.84
UNI 65100QC	Lt. Green	65°	Flat Spray	16.09	19.04	22.75	32.17	39.4	50.87
UNI 65700QC	Red	65°	Flat Spray	11.34	13.42	16.04	22.68	27.78	35.86
UNI 6560QC	Green	65°	Flat Spray	9.76	11.55	13.8	19.52	23.91	30.86
UNI 6550QC	Red	65°	Flat Spray	8.17	9.67	11.56	16.34	20.02	25.84
UNI 6540QC	Yellow	65°	Flat Spray	6.59	7.8	9.32	13.18	16.14	20.84
UNI 6530QC	Purple	65°	Flat Spray	4.74	5.62	6.71	9.49	11.62	15
UNI 8070QC	Beige	80°	Flat Spray	11.34	13.42	16.04	22.68	27.78	35.86
UNI 8050QC	Dk. Green	80°	Flat Spray	8.17	9.67	11.56	16.34	20.02	25.84
UNI 8040QC	Beige	80°	Flat Spray	6.59	7.8	9.32	13.18	16.14	20.84
UNI 8020QC	Yellow	80°	Flat Spray	3.16	3.74	4.47	6.32	7.75	10
UNI 8010QC	Black	80°	Flat Spray	1.58	1.87	2.24	3.16	3.87	5
UNI 8006QC	Lt. Green	80°	Flat Spray	0.98	1.15	1.38	1.95	2.39	3.08
UNI 9540QC	Black	95°	Flat Spray	6.59	7.8	9.32	13.18	16.14	20.84
UNI 9530QC	Grey	95°	Flat Spray	4.74	5.62	6.71	9.49	11.62	15
UNI 9520QC	Red	95°	Flat Spray	3.16	3.74	4.47	6.32	7.75	10
UNI 9503QC	Orange	95°	Flat Spray	0.47	0.56	0.67	0.94	1.16	1.49
UNI 12010QC	Grey	120°	Flat Spray	1.58	1.87	2.24	3.16	3.87	5
UNI 12070QC	Black	120°	Flat Spray	11.34	13.42	16.04	22.68	27.78	35.86
UNI 29HCQC	Dk. Green	50°	Hollow Cone	9.23	10.93	13.05	18.46	22.61	29.19
UNI 50HCQC	Black	65°	Hollow Cone	15.82	18.73	22.37	31.64	38.75	50.03