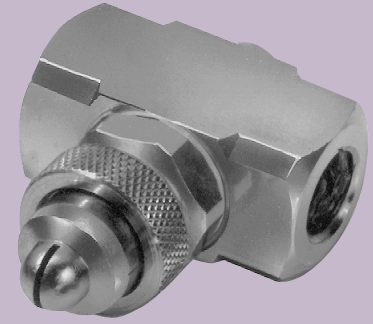
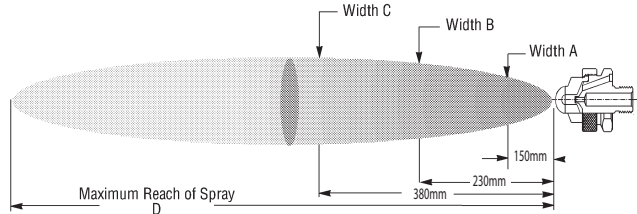


XAPF

Pressure-fed/Internal Mix/Flat Fan

DESIGN/SPRAY CHARACTERISTICS

- Internal mix
- Flat fan, wide angle spray patterns (between 80° and 90°)
- Very fine atomization



1/4" XA PF300 A
XA 00 Body; A Hardware

Dimensions are approximate. Check with BETE for critical dimension applications.

XA PF Set-up Flow Rates and Dimensions

Pressure-fed, Internal Mix, Flat Spray Pattern, 1/8" and 1/4" Pipe Sizes, BSP or NPT

Pipe Size	Spray Set-up Number	Fluid and Air Cap Numbers	0.7 Bar Liquid			1.5 Bar Liquid			2.0 Bar Liquid			3.0 Bar Liquid			4.0 Bar Liquid			Spray Dimensions								
			Air (bar)	l/h	Nm ³ /h	Air (bar)	l/h	Nm ³ /h	Air (bar)	l/h	Nm ³ /h	Air (bar)	l/h	Nm ³ /h	Air (bar)	l/h	Nm ³ /h	air	liquid	A (mm)	B (mm)	C (mm)	D (m)			
1/8 OR 1/4	PF 050	Fluid Cap FC4 & Air Cap AC1301	0.7	5.5	1.44	1.3	1.86	2.0	8.6	2.52	2.7	11.2	3.12	3.9	12.0	4.14	4.6	12.0	4.14	1.1	0.7	250	360	460	2.6	
			0.9	4.7	1.62	1.5	7.7	2.16	2.2	7.5	2.82	3.0	10.1	3.36	4.6	9.7	4.86	5.3	7.5	5.58	2.1	1.5	360	480	660	3.0
			1.0	4.1	1.86	1.8	6.5	2.52	2.5	6.2	3.12	3.2	9.1	3.72	5.3	7.5	5.58	6.0	5.3	6.24	2.8	2.0	380	530	760	3.2
			1.1	3.5	2.04	2.1	5.4	2.82	2.8	5.2	3.42	3.5	8.1	3.96	6.0	5.3	6.24	6.3	4.3	6.60	3.5	3.0	470	610	860	3.4
			1.3	3.0	2.22	2.4	4.3	3.12	3.1	4.2	3.78	4.2	5.4	4.74	6.3	4.3	6.60	6.7	3.3	6.96	6.0	4.0	560	740	940	4.0
			1.4	2.5	2.40	2.7	3.3	3.42	3.2	3.7	3.90	4.6	4.2	5.10	6.7	3.3	6.96	7.0	2.4	7.32						
	1.5	2.0	2.64	2.8	2.8	3.60	3.4	3.2	4.08	4.9	3.1	5.46	7.0	2.4	7.32											
	PF 100	Fluid Cap FC3 & Air Cap AC1303	1.3	3.9	1.80	2.1	7.4	2.40	3.0	6.1	3.12	3.9	9.4	3.60	5.3	10.2	4.68	5.3	10.2	4.68	1.5	0.7	250	330	460	1.8
			1.4	3.0	1.98	2.4	5.3	2.70	3.1	5.3	3.24	4.2	7.2	4.02	5.6	8.3	5.04	6.0	6.6	5.34	2.7	1.5	360	510	690	2.0
			1.5	2.3	2.10	2.5	4.4	2.82	3.2	4.5	3.42	4.6	5.3	4.38	6.0	6.6	5.34	6.3	5.1	5.88	3.2	2.0	480	580	740	2.0
			1.7	1.8	2.28	2.7	3.7	3.00	3.4	3.8	3.54	4.9	3.8	4.80	6.3	5.1	5.88				4.2	3.0	610	740	940	2.1
			1.8	1.3	2.46	2.8	3.1	3.12	3.5	3.2	3.72										4.2	3.0	610	740	940	2.1
2.0			1.0	2.64	3.0	2.6	3.30	3.9	1.8	4.08										5.6	4.0	640	760	970	2.3	
PF 150	Fluid Cap FC3 & Air Cap AC1301	0.9	8.2	1.20	1.4	14.4	1.62	2.1	13.5	2.16	2.7	19.1	2.52	4.6	16.1	4.14	4.6	16.1	4.14	1.1	0.7	360	460	710	2.1	
		1.0	6.8	1.38	1.7	11.9	1.92	2.4	11.4	2.52	3.0	17.1	2.76	4.9	13.8	4.56	5.3	11.5	4.98	2.1	1.5	430	610	810	2.4	
		1.1	5.5	1.62	2.0	9.5	2.22	2.7	9.2	2.82	3.2	15.1	3.12	5.3	11.5	4.98	6.0	6.6	5.34	3.0	2.0	510	660	890	2.6	
		1.3	4.1	1.80	2.1	8.3	2.40	3.0	7.1	3.18	3.5	13.1	3.42	5.6	9.3	5.40	6.3	7.3	5.82	3.5	3.0	580	760	970	2.7	
		1.4	2.9	2.04	2.2	7.1	2.58	3.2	5.0	3.54	4.2	8.1	4.32	6.0	7.3	5.82	6.3	5.6	6.24	5.6	4.0	580	760	970	3.2	
		2.4	6.1	2.76	3.4	4.0	3.78	4.6	5.9	4.74	6.3	5.6	6.24	6.7	4.3	6.72										
2.5	5.1	2.94	3.5	3.3	3.96	4.9	4.0	5.16	6.7	4.3	6.72															
PF 200	Fluid Cap FC3 & Air Cap AC1302	1.0	9.0	1.50	2.0	10.4	1.62	2.4	11.6	2.88	3.1	15.6	3.36	4.2	17.1	4.38	4.6	17.1	4.38	1.4	0.7	100	130	170	3.0	
		1.1	7.8	1.80	2.1	9.3	2.70	2.5	10.4	3.06	3.2	14.6	3.54	4.6	15.0	4.80	5.3	12.8	5.22	2.5	1.5	130	150	200	3.7	
		1.3	6.6	1.92	2.2	8.2	2.88	2.7	9.4	3.24	3.4	13.7	3.72	4.9	12.8	5.22	6.0	6.6	5.34	3.2	2.0	130	170	220	4.0	
		1.4	5.2	2.16	2.5	6.1	3.30	3.0	7.3	3.66	3.8	10.8	4.26	5.3	11.0	5.64	6.3	7.2	5.82	3.8	3.0	150	220	280	4.2	
		1.7	3.1	2.64	2.8	4.3	3.72	3.2	5.5	4.08	4.2	8.5	4.92	5.6	9.4	6.18	6.3	7.2	5.82	5.3	4.0	200	250	330	4.8	
		2.0	2.0	3.00	3.1	3.0	4.14	3.5	4.1	4.50	4.9	5.2	5.88	6.3	7.2	7.14	8.04									
2.2	1.1	3.36	3.4	2.0	4.50	3.8	2.9	4.86	6.0	2.3	7.20	7.0	6.1	8.04												
PF 250	Fluid Cap FC2 & Air Cap AC1304	1.1	11.2	3.24	2.1	18.0	4.74	2.7	19.6	5.58	3.5	27.0	6.72	4.6	33.0	8.22	4.6	33.0	8.22	1.4	0.7	150	180	200	3.0	
		1.3	8.5	3.60	2.2	15.8	5.04	2.8	17.3	5.88	3.7	25.0	6.96	4.9	28.0	8.94	5.3	24.0	9.66	3.0	1.5	230	280	330	3.2	
		1.4	6.5	3.90	2.4	13.6	5.34	3.0	15.2	6.18	3.8	23.0	7.26	5.3	24.0	9.66	6.0	6.6	5.34	3.7	3.0	250	330	400	3.4	
		1.5	5.0	4.26	2.5	11.6	5.70	3.1	13.2	6.54	3.9	21.0	7.56	5.6	19.7	10.4	6.3	15.7	11.2	3.7	3.0	300	380	460	3.5	
		1.7	3.8	4.62	2.7	10.4	6.84	3.2	11.4	6.84	4.1	18.9	7.92	6.0	15.7	11.2	7.0	12.7	12.0	5.3	4.0	330	410	480	4.0	
		2.7	10.6	6.84	4.9	14.8	8.40	4.2	17.0	8.22	6.3	12.4	12.0													
PF 300	Fluid Cap FC1 & Air Cap AC1304	0.9	27.0	1.98	1.8	38.0	3.30	2.4	39.0	4.02	3.2	58.0	4.56	4.6	59.0	6.36	4.6	59.0	6.36	1.1	0.7	180	230	300	3.4	
		1.0	20.0	2.28	2.1	28.0	3.96	2.7	30.0	4.62	3.5	47.0	5.22	5.3	40.0	7.92	5.3	40.0	7.92	2.4	1.5	230	300	410	3.5	
		1.1	15.9	2.70	2.2	24.0	4.26	3.0	24.0	5.22	3.8	38.0	5.82	5.6	32.0	8.70	6.0	32.0	8.70	3.2	2.0	250	330	430	3.7	
		1.3	12.5	2.88	2.4	21.0	4.56	3.2	17.8	5.88	3.9	34.0	6.18	6.0	26.0	9.48	6.3	20.0	10.3	3.9	3.0	300	380	480	3.8	
		1.4	10.2	3.36	2.5	17.8	4.92	3.4	15.1	6.18	4.2	27.0	6.78	6.3	20.0	10.3	6.7	15.9	11.1	6.0	4.0	300	380	480	3.8	
		1.5	7.6	3.72	2.7	15.1	5.22	3.5	12.9	6.54	4.6	20.0	7.56	6.7	15.9	11.1	7.0	12.7	11.9			330	410	510	4.4	
PF 350	Fluid Cap FC1 & Air Cap AC1305	1.0	17.0	1.38	2.0	24.0	2.64	2.4	28.0	3.06	3.4	38.0	4.32	3.9	65.0	4.50	4.6	65.0	4.50	1.1	0.7	100	130	150	2.4	
		1.1	11.0	1.62	2.1	18.9	3.00	2.5	23.0	3.54	3.5	33.0	4.80	4.2	53.0	5.34	4.6	40.0	6.48	2.1	1.5	100	130	170	3.0	
		1.3	7.6	1.98	2.2	14.4	3.36	2.7	18.9	3.96	3.7	28.0	5.34	4.6	40.0	6.48	6.0	30.0	7.62	2.8	2.0	130	170	220	3.4	
		1.4	3.2	2.40	2.4	10.6	3.78	2.8	15.1	4.44	3.8	23.0	5.82	4.9	30.0	7.62	6.3	21.0	8.94	3.7	3.0	150	200	280	3.6	
		2.5	7.2	4.26	3.0	11.7	4.74	3.9	19.7	6.30	5.3	19.7	6.30	5.3	21.0	8.94	4.9	13.8	10.4	4.9	4.0	200	250	350	4.0	
		4.6	7.2	8.28	6.3	13.5																				
PF 400	Fluid Cap FC5 & Air Cap AC1306	1.0	29.0	5.40	1.8	56.0	7.02	2.1	100	7.14	3.0	126	8.40	4.1	140	10.9	4.1	140	10.9	1.0	0.7	180	200	250	3.4	
		1.1	18.9	6.48	2.0	40.0	7.98	2.2	79.0	7.98	3.1	110	9.06	4.2	125	11.6	4.6	89.0	13.5	1.8	1.5	250	300	430	3.8	
		2.2	62.0																							
		2.5	48.0																							
		2.7	36.0																							
		10.6																								
3.7	48.0	12.6																								
3.8	37.0	13.5																								

Standard Materials: Nickel-plated Brass, 303 Stainless Steel, and 316 Stainless Steel